

μ μ μ -pellet-

BIOPLEX (120-750.000 kcal/h)

						<i>P max.</i>		
	<i>kW</i>	<i>Kcal/h</i>	<i>L</i>	<i>l</i>	<i>h</i>	<i>bar</i>	<i>inch</i>	<i>mm</i>
MCL BIO 120	140	120.000	1.220	1.600	1.650	2	2"	240
MCL BIO 140	163	140.000	1.440	1.600	1.650	2	2"	240
MCL BIO 160	186	160.000	1.540	1.600	1.650	2	2"	295
MCL BIO 180	209	180.000	1.690	1.600	1.650	2	2½"	295
MCL BIO 200	233	200.000	1.940	1.600	1.650	2	2½"	295
MCL BIO 250	291	250.000	1.840	1.840	2.000	2	3"	390
MCL BIO 280	326	280.000	1.840	1.840	2.000	2	3"	390
MCL BIO 300	349	300.000	2.090	1.840	2.000	2	3"	390
MCL BIO 350	407	350.000	2.340	1.840	2.000	2	4"	390
MCL BIO 400	465	400.000	2.340	1.840	2.000	2	4"	390
MCL BIO 450	522	450.000	2.590	1.840	2.000	3	5"	390
MCL BIO 500	581	500.000	2.840	1.840	2.000	3	5"	485
MCL BIO 600	698	600.000	2.330	2.440	2.400	3	5"	485
MCL BIO 700	814	700.000	2.830	2.440	2.400	3	5"	485
MCL BIO 750	750	750.000	3.330	2.440	2.400	3	5"	485

μ μ , μ μ :
μ , μ μ , μ μ ,
μ , μ μ .



ISCIR CERT CE

PELLET
6-10 mm

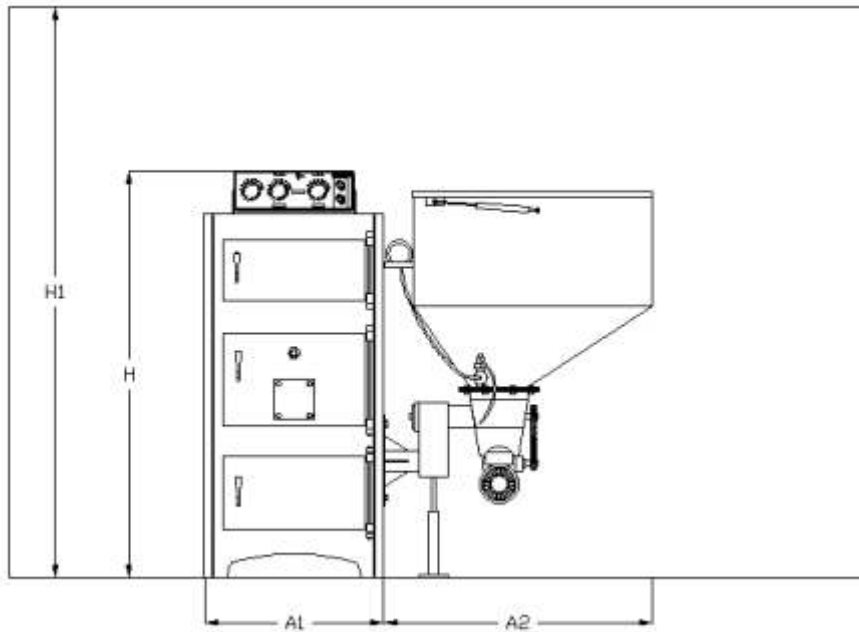
12-22 mm

8-20 mm

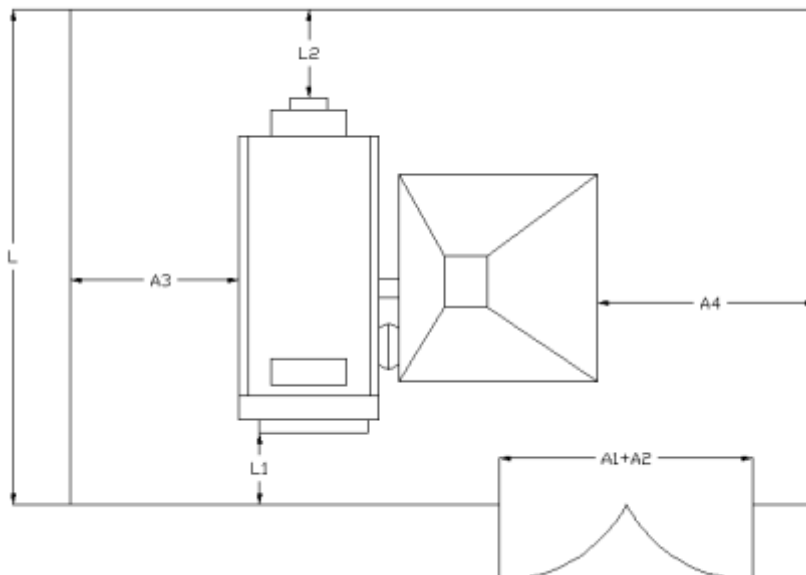
3-18 mm



MCL-BIO 30-100.000 kcal/h



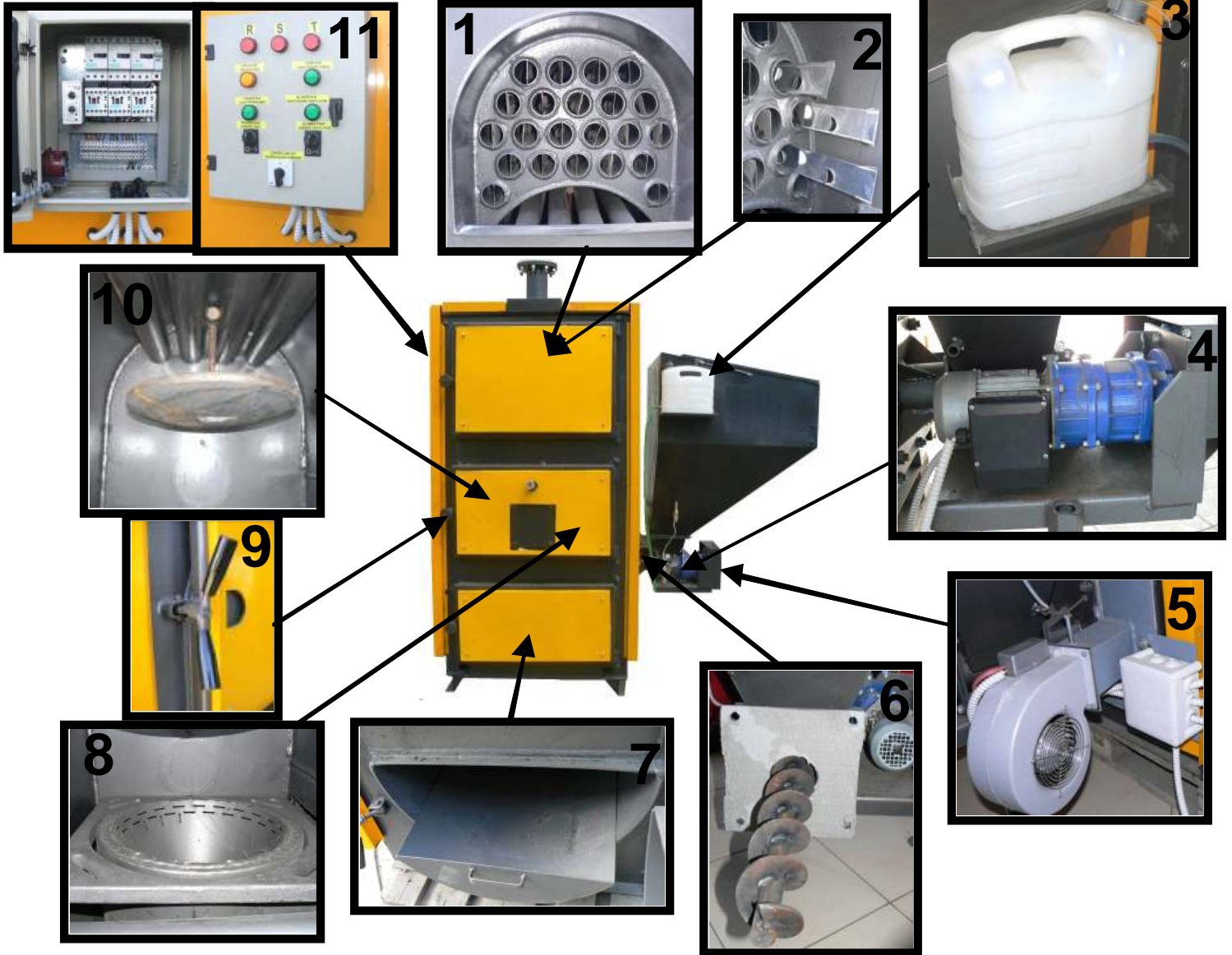
	[mm]								
	A1	A2	A3	A4	H	H1	L	L1	L2
BIOPLEX 30	680	800	>900	>1500	1550	>2800	>3150	>1400	>600
BIOPLEX 40	680	800	>900	>1500	1550	>2800	>3250	>1500	>600
BIOPLEX 50	680	800	>900	>1500	1550	>2800	>3350	>1600	>600
BIOPLEX 60	680	800	>900	>1500	1550	>2800	>3450	>1700	>600
BIOPLEX 70	680	800	>900	>1500	1550	>2800	>3550	>1800	>600
BIOPLEX 80	680	800	>900	>1500	1550	>2800	>3700	>1900	>600
BIOPLEX 100	680	800	>900	>1500	1550	>2800	>3800	>2000	>600



μ μ μ -pellet-

BIOPLEX

μμ μ



1. -
- 2.
3. μ
4. μ μ
- 5.
- 6.
- 7.
- 8.
- 9.
- 10.
11. μ